



Oregon's Yellowstone – the Siskiyou Wild Rivers
a Wilderness and Wild & Scenic Rivers proposal





OREGON WILD

OUR MISSION:

Since 1974, Oregon Wild has worked to protect and restore Oregon's wildlands, wildlife, and waters as an enduring legacy for future generations.

EDITOR:

Sean Stevens

CONTRIBUTORS:

Erik Fernandez

Ani Kame'enui

MAPS:

Erik Fernandez

DESIGN:

Adrienne Leverette

COVER PHOTOS (clockwise from L):

Wendell Wood

Ken Morrish

Ken Morrish

Rolf Skar

BACK COVER PHOTOS:

Wendell Wood

ACKNOWLEDGEMENTS:

Kalmiopsis Audubon Society

Ken Morrish/Fly Water Travel

Klamath-Siskiyou Wildlands Center

Siskiyou Project

Soda Mountain Wilderness Council

To find out more about our conservation work
please visit www.oregonwild.org

Copyright 2010, Oregon Wild

Printed on New Leaf 100% recycled (50% post-consumer),

FSC-certified paper with soy based inks.

Cover printed on 50% recycled (30% post-consumer) paper.



Introduction — Oregon's Wilderness deficit

The lore of the American West persists. From the creation stories of native peoples to the first accounts of white explorers, the American frontier has always been viewed as a wild, untamed, and bountiful land. Today, writers, artists, and reporters still view the Pacific states as “the West” – a place where wilderness is plentiful and the people value their natural heritage.

Sadly, few places actually reflect this mythologized vision of the West. In Oregon, extractive industries and other forms of development have persistently encroached on the pristine character of the land. Only 4% of Oregon's 63 million acres are permanently protected from further development and degradation. An ever-expanding population highlights the dual needs of safeguarding areas from industrial expansion and preserving special places for a growing population to benefit from and enjoy. Future generations will need protected landscapes for clean drinking water, outdoor recreation, global warming mitigation, and spiritual renewal.

Among the millions of acres of wild, scenic, and unique land deserving of protection in Oregon, one special place stands out. It is vast, diverse, and beloved. It is Oregon's Yellowstone – the Siskiyou Wild Rivers. The following pages make the case for its permanent protection.

The carnivorous
cobra lily *Darlingtonia
californica* grows in
bogs throughout the
Siskiyou Wild Rivers.

KAREN PHILLIPS

"I think this is probably the most important, the most biologically significant, unprotected landscape in the American West"

– Secretary of the Interior under President Clinton, Bruce Babbitt



The Siskiyou Wild Rivers represents the largest intact coastal Wilderness between the Olympics and San Francisco.
Light green = existing Wilderness Dark green = proposed Wilderness

What makes this Oregon's Yellowstone?

When Congress established the world's first National Park in Wyoming in 1872, Yellowstone became the symbol of a previously untested idea – forever protecting wildlife and a large expanse of habitat on which they depend.

Wildlife was such a central idea that the first paid staffer at the Park was appointed as “gamekeeper” to control poaching.

Today, Yellowstone National Park is known as a haven for elk, grizzly, bison, and wolves. It is also home to over 1,000 plant species.

Nearly one thousand miles away, the Siskiyou Wild Rivers area in southwestern Oregon is one of the few regions in the lower 48 that can compare to Yellowstone's biodiversity. With 1,400 known plant species –



Sugarstick
(*Allotropa virgata*)
DON JACOBSON

over 100 of which are found nowhere else on Earth – and a far-reaching network of uniquely healthy salmon watersheds, Oregon's own Yellowstone is well known as an ecological ark. It is the most botanically diverse coniferous forest in North America, if not the world.

A trip down the Pacific coastal mountains from the southern edge of the Olympics to San Francisco Bay will reveal a fragmented landscape: the towns and cities of southwest Washington, a spider web of logging roads, clear-cuts in the Oregon Coast Range, and a fraction of our ancient Redwoods still standing tall in northern California. The only exception of significant size in this scene of development and resource depletion is the Siskiyou Wild Rivers. As the largest intact area of wildlife habitat in the state of Oregon, the Siskiyou Wild Rivers is Oregon's Yellowstone. Nowhere in the coastal mountains from the Olympics to south of San Francisco will you find a larger contiguous wilderness. This spectacular region is Oregon's most unique natural treasure.



Cliff Maid (*Lewisia cotyledon*)
WENDELL WOOD

Plant diversity

As a result of the region's unique geological history, the Siskiyou Wild Rivers area is host to highly evolved plants and wildflowers. Without geologic disruption, plant life evolved over a longer time span than most plant communities in the Pacific Northwest, allowing the region to produce an exceptional portfolio of native plants and wildflowers. With over 100 plant species growing in the area found nowhere else on earth, including one of the rarest plants in all of North America, the *Kalmiopsis Leachiana*, the World Conservation Union has designated the Siskiyou Wild Rivers an Area of Global Botanical Significance. Likewise, the region hosts an astounding 28 different types of conifer trees, including Oregon's only redwood forests.

In addition to native plants, Oregon's Yellowstone is home to a collection of critical salmon rivers, due in part to the absence of large dams. The result is wild salmon runs that are healthier than those in many other western rivers, like the Klamath, Sacramento, and Columbia. The free flowing Siskiyou rivers welcome coho, chinook, steelhead, and even green sturgeon. These healthy fish populations provide the economic underpinnings for commercial and recreational fisheries and provide a link to a natural cultural heritage long valued by the inhabitants of southwest Oregon.

Not surprisingly, many of these great salmon rivers are also perfect waters for rafting, kayaking, and canoeing. Thousands flock every year to the world class rapids and scenery of the Rogue River, while only the most skilled boaters attempt the Green Wall rapids

of the Illinois River. Whitewater rafting adventure hot spots in the Siskiyou Wild Rivers help to bolster Oregon's reputation as an outdoor recreation destination and boost local economies in towns like Grants Pass and Gold Beach.

The diverse array of plants and wildlife found in the Siskiyou Wild Rivers face an uncertain future in the face of climate change. We know that some degree of climate change is inevitable. For wildlife to survive the transition, they will need a system of habitat reserves. If protected, the Siskiyou Wild Rivers will play a key role as we cope with climate change. As the climate warms over time, both plant and animal species will be forced to adapt in order to survive. Warming temperatures cause habitats to shift, likely requiring wildlife to move up in elevation and/or north to find suitable habitat. Protecting habitat corridors will allow for

fluid migration and flexibility. The Siskiyou Wild Rivers area provides quality habitat at an elevation range from sea level to over 5,000 feet as well as a north-south corridor range of 55 miles. No other unprotected expanse of wild land in Oregon can compare.

The Siskiyou Wild Rivers area has a long history of resiliency and adaptability much like what scientists have observed

The World Conservation Union has designated the Siskiyou Wild Rivers an "Area of Global Botanical Significance."

in Yellowstone. While the large Yellowstone fire in 1988 was portrayed in the media as a disaster, time has shown it to be a great success story of nature's restoration and recovery. The Siskiyou's share a similar history. In 2002 the "Biscuit" fire burned through large portions of the

existing Kalmiopsis Wilderness and surrounding roadless forests. While at the time of the fire some claimed it was a disaster, scientists and naturalists saw it differently. Today, natural recovery is evidenced by wildflower blooms and new growth of diverse tree species in burned



Illinois River serpentine RENE CASTERAN/USFS

Geological luck

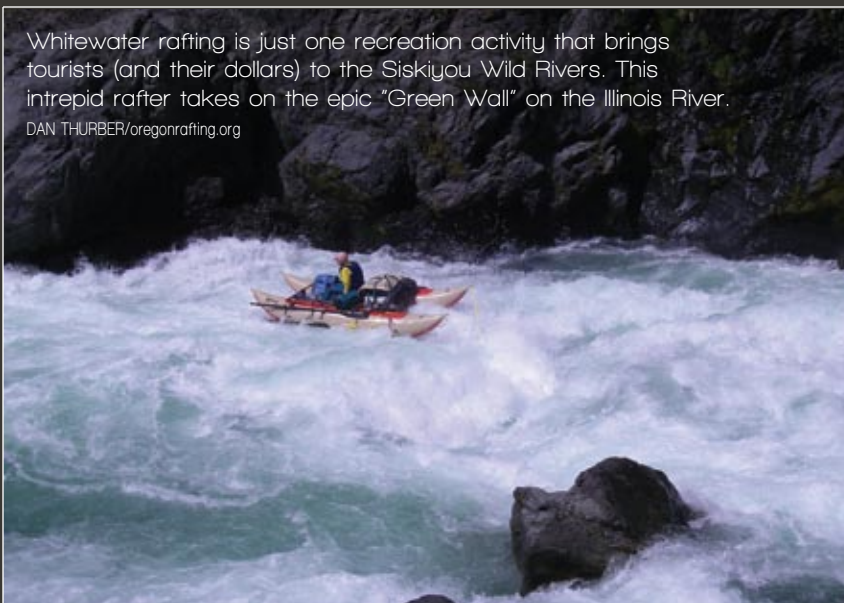
The Siskiyou Wild Rivers area has a truly unique geological history. By a stroke of geological luck, the area avoided glacier-cover in the last ice age, allowing the region's plants and animals to evolve while life in other areas was frozen. Similarly, the Siskiyou Wild Rivers area also dodged geologically recent volcanic activity. Much of Oregon was heavily influenced by volcanic eruptions such as the one that occurred at Mount Mazama – forming Crater Lake. Additionally, one of the more rare soil types in the country is found here, called serpentine. Serpentine soils have evolved over the millennia with unique combinations of soil nutrients (low amounts of calcium, nitrogen and phosphorous) that led to an unusually high number of endemic plants (species found nowhere else on Earth).

areas. The forests in the region have long been adapted to fire. Periodic disturbance events like fire have helped shape the flora and fauna over millennia. The knobcone pine is a classic case of fire playing a major role in the evolution of the area's vegetation. The tree's cones will only open at 200 degrees Fahrenheit and thus require fire to naturally release their seeds. The Siskiyou Wild Rivers area has historically burned in a mosaic pattern approximately every 150 years. If protected as Wilderness and allowed to recover naturally, the Siskiyou Wild Rivers will share the same success story as Yellowstone National Park.



Forest recovery after fire starts small and Wilderness protections for Oregon's Yellowstone would ensure healthy, natural regeneration.

MEGAN REDFIELD



Whitewater rafting is just one recreation activity that brings tourists (and their dollars) to the Siskiyou Wild Rivers. This intrepid rafter takes on the epic "Green Wall" on the Illinois River.

DAN THURBER/oregonrafting.org

An economic driver

While Wilderness areas certainly deserve protection for their intrinsic value, Oregon's wild places also provide important economic benefits ranging from ecosystem services to local job opportunities. Only in the last 20 years have economists calculated the monetary value of Wilderness and protected natural areas. In that time, numerous studies have illustrated that a Wilderness designation boosts nearby property values and is a major factor in drawing businesses and jobs to communities by increasing the quality of life. Nationally, the outdoor recreation industry contributes well over \$700 billion to the American economy, and supports nearly 6.5 million jobs. Aside from the direct benefits of increased property value and job creation, protected areas provide a whole host of ecosystem services. Our roadless forests provide inexpensive and high quality drinking water for communities downstream of protected watersheds. The Forest Service estimates that 60 million Americans get their water from a source that originates on federal forest land. In southern Oregon, communities such as Cave Junction, Brookings, Powers, Galice, O'Brien, Takilma, Agness, Riddle, and Selma all get their drinking water from the Siskiyou Wild Rivers. Using the natural filtration function of forests saves hundreds of millions of dollars across the country in annual water treatment costs.



Oregon's Yellowstone at risk

As settlers arrived in Oregon in the 1840s they encountered a different landscape than we know today. This was a time before massive clear-cutting, salmon-killing dams, mountains scarred in the search for gold, and ever-expanding development. Today, Oregon's two million acres of protected Wilderness offer a hint of what this land was once like. However, the still unprotected and wildest lands in the Siskiyou Wild Rivers area face a multitude of modern-day threats.

Mining

Like logging, mining has long been a part of Oregon history. It has generated tremendous conflict over the years. In the late 1800s, rumors of gold in the John Day, Rogue, and Snake Rivers prompted boom towns to spring

(continued on page 12)

The only Redwoods in Oregon would be protected as Wilderness if the Siskiyou Wild Rivers proposal is approved by Congress.

WENDELL WOOD



GABE HOWE

Rough and Ready Creek

ACREAGE: 80,565 acres

WILDLIFE: fall chinook salmon, and winter steelhead

ELEVATION RANGE: 1,280 to 4,742 feet

DESCRIPTION: The Rough and Ready Creek watershed and neighboring West Fork of the Illinois River have been ranked as having the most plant diversity of any watershed in the state of Oregon. Unfortunately Rough and Ready Creek is threatened by potentially disastrous mining operations. The Rough and Ready Creek wilderness unit includes the threatened Baldface and Josephine Creeks.

BEST TRAIL: The Rough and Ready Creek Trail winds through a fire recovery area. Its unique serpentine soils host countless wildflowers that bloom from spring to summer.



TIM PALMER

Elk River

ACREAGE: 21,000 acres

WILDLIFE: coho salmon, chinook salmon, steelhead, bald eagle, black bear, and elk

ELEVATION RANGE: 100 to 4,026 feet

DESCRIPTION: The Elk River has one of the strongest runs of salmon in the lower 48 for a river of its size. The intact forests of the watershed are critical to the health of these salmon runs as they provide cool, clean water. This directly translates to a healthy fishing industry downstream in coastal communities like Port Orford. Local anglers are well aware of the connection between protected wilderness and healthy salmon runs, and have been supportive of additional Wilderness designations.

BEST TRAIL: The best views of the Elk River watershed and surrounding mountain ranges can be found on the Iron Mountain trail at the headwaters of Elk River.

The unprotected gems of Oregon's Yellowstone



KEN MORRISH/FLY WATER TRAVEL

Lower Rogue River

ACREAGE: 10,265 acres

WILDLIFE: Green sturgeon, fall and spring chinook salmon, coho salmon, summer and winter steelhead, black bear, bald eagle, marbled murrelet, northern spotted owl, elk, Del Norte salamander, and red tree vole

ELEVATION RANGE: 100 to 3,200 feet

DESCRIPTION: One of the original eight rivers designated upon passage of the Wild & Scenic Rivers Act in 1968, the lower Rogue River is one of Oregon's most famous and treasured waterways. With cool, clear waters, the lower Rogue is a haven for fish, wildlife, unique flora, and the perfect whitewater boating or angling opportunity year round.

BEST TRAIL: The Rogue River National Scenic Trail begins at Grave Creek and continues downriver for 40 miles! This trail is a great introduction to the beauty and offerings of the wild Rogue.

Oregon Redwoods

ACREAGE: 25,462 acres

WILDLIFE: northern spotted owl, bald eagles, bear, elk, steelhead and salmon

ELEVATION RANGE: 100 to 2,800 feet

DESCRIPTION: Most people think that the world-renowned redwood forests are limited to northern California. Not so. In the far southwest corner of Oregon, a secret grove of redwood forests grows. The largest redwood tree in Oregon is a massive fifteen feet in diameter. Unfortunately, many of the redwoods in Oregon have already been logged. We have a responsibility to protect those that remain.

BEST TRAIL: The short Peavine Ridge trail highlights some of the largest redwoods in Oregon.



JUSTIN ROHDE

Chetco River

ACREAGE: 6,600 acres

WILDLIFE: Coho and fall chinook salmon, winter steelhead, northern spotted owls, deer, elk, bald eagles, and black bear

ELEVATION RANGE: 200 to 3,652 feet

DESCRIPTION: The Chetco River is one of the most spectacular in southwest Oregon and is also one of the most threatened. Old-growth forests and the river's famous turquoise waters are the highlight. The river is primarily threatened by suction dredge mining which degrades salmon and steelhead habitat.

BEST TRAIL: The Chetco River Gorge Trail (#1112) is the easiest way to experience the remote, rugged Chetco backcountry. To reach the trailhead, you must ford the river so it's best done when flows are low in late spring through early fall.



RENE CASTERAN/USFS

Here are just a few of the special places included in the
Siskiyou Wild Rivers Wilderness and Wild & Scenic Rivers proposal.

Illinois River

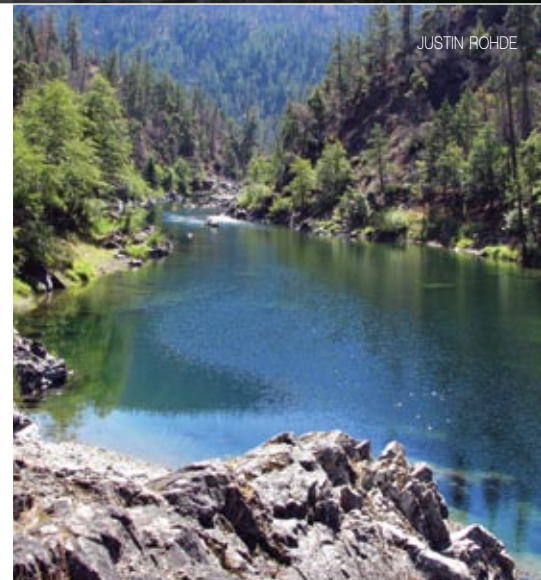
ACREAGE: 103,000 acres

WILDLIFE: winter and summer steelhead, coho salmon, chinook salmon, black bear, bald eagle, marbled murrelet, northern spotted owl, and elk

ELEVATION RANGE: 300 to 5,034 feet (at Sugarloaf Mountain)

DESCRIPTION: A major tributary to the Rogue River, the Illinois is famous for terrific whitewater rafting and outstanding salmon spawning habitat. The river's Class V "Green Wall" rapid draws only the most skilled boaters, while the undammed, cool waters are a haven for thousands of wild fish. The Illinois provides the Rogue River with about 33 percent of its wild chinook and coho, and 10 percent of its wild steelhead each year.

BEST TRAIL: The Illinois River Trail begins at a Forest Service campground near Agness and offers a one or two day hike through the scenic Illinois River canyon. An excellent two-mile day-hike brings you to Buzzard's Roost, a stunning overlook perched high above the river.



JUSTIN ROHDE

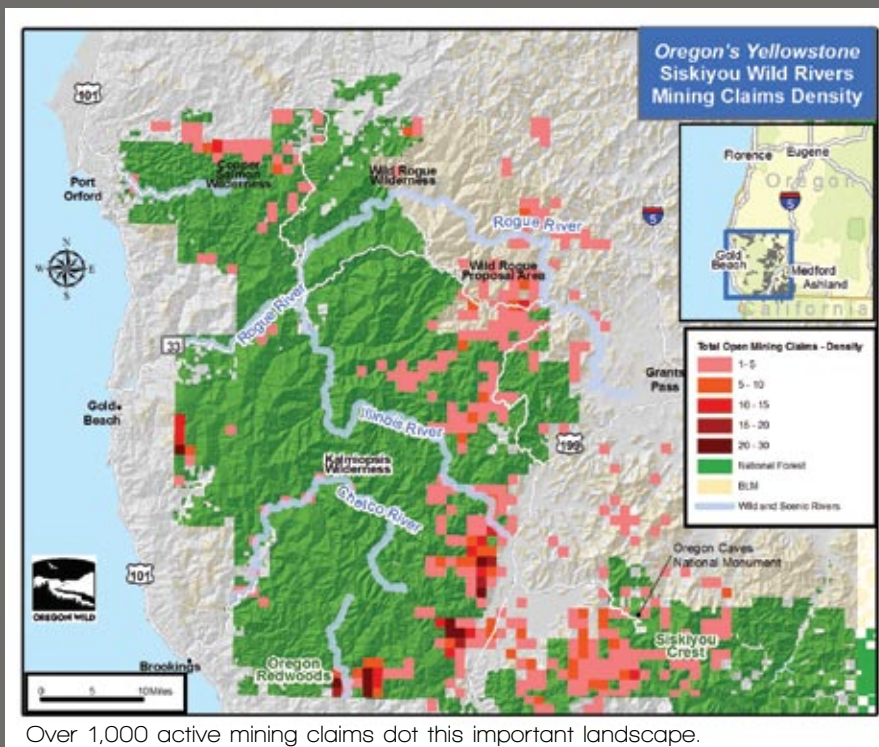


(continued from page 9)

up. Conflicts over gold were often settled at gun point. In the 1930s and 1940s, industrialized mining came to the Cascades, unearthing lead, zinc, copper, and silver. These mining operations often left a toxic legacy.

Today, mining in one of Oregon's most unique natural treasures poses a significant threat to the historically pristine Siskiyou Wild Rivers area. Since 2001, when a Clinton administration mining moratorium was reversed, there have been more than 800 new mining claims filed in the region.

Mining activities in and alongside rivers and streams most directly impact water quality. Toxic runoff, leaching, and erosion from mining explorations and tailings result in poor water quality for downstream wildlife and human communities. Mining has also led to abusive land use practices



at claim sites, such as illegal clear-cuts, heavy equipment use in and near streams, riparian vegetation removal, and irresponsible road building for vehicle access. Furthermore, the removal and extreme disruption of gravel streambeds harms spawning habitat for salmon. The abundance of relatively-cheap suction dredge equipment (diesel powered vacuums mounted on rafts that suck up gravel from the bottom of rivers and streams) has led to a boom in the “recreational” mining industry in Oregon’s Siskiyou Wild Rivers. The damage from suction dredge mining has been so significant that it was banned in California in 2009 to protect salmon and clean water.

Off-road vehicles

With over 5,900 miles of roads, plus an additional 170 miles of off road trails dedicated to motorized use, there is plenty of opportunity for off-road vehicle (ORV) use in the 1.8 million acre

Rogue River-Siskiyou National Forest. Former U.S. Forest Service Chief Dale Bosworth once characterized ORV use as one of the “four key threats” facing our national forests. Because many of the roads in the Siskiyou Wild Rivers area were constructed as access roads for logging or mining, they have opened quiet, untouched habitat to a diversity of uses. Unlike quiet recreation in Wilderness areas, ORV use results in serious damage to the landscape. From degrading wildflower meadows and eroding delicate serpentine soils, to disrupting salmon spawning habitat with oversized spinning tires churning through a quiet Siskiyou creek; ORV use has the potential to wreak havoc on this unique landscape.

In addition to increased erosion, sedimentation, and soil compaction, ORVs are also dangerous transporters of disease. Carried by tires caked with mud or plant material, ORVs

“In early 2008, I wrote Oregon’s congressional delegation in support of Wilderness protection for the Siskiyou Wild Rivers area surrounding the existing Kalmiopsis Wilderness. The need for protection in this area has only grown since that letter was written.”

— Oregon Governor Ted Kulongoski





This old growth tree on the Siskiyou National Forest was cut down in the name of "forest health."

ELIZABETH FERYL

spread the seeds of invasive plants and disease from one region to another—creating harmful conditions long after an ORV has left the trail. Trail conflicts between ORV users and traditional recreationalists like hikers and horseback riders are also frequent in this region, as quiet recreation in this once remote and hardy area has been infiltrated by rough and destructive ORVs.

Logging

With less than 20 percent of the Rogue River-Siskiyou forest protected as Wilderness, the Siskiyou Wild Rivers area continues to host numerous logging projects each year. Like ORVs, logging operations bring roads, erosion, and irreparable damage. Once home to the nation's largest timber sale in history, logging activities in the region are widely known for

the controversy they sparked in the wake of the 2002 Biscuit fire. Originally estimated to fill 74,000 logging trucks (enough to stretch from Mexico to Canada), a 2004 proposal for logging in the burned area prompted heated debate over the impacts of post-fire logging, particularly in such a rugged and ancient landscape.

Logging roads through Oregon's Yellowstone create erosive conditions and vehicle access for illegal and harmful activities such as mining. A recent study showed that a 2006 logging operation in a sensitive post-fire area reduced natural regeneration of trees by over 70 percent. Damage to fragile, post-fire forests due to logging eliminates valuable wildlife habitat and increases the forest's vulnerability. Without Wilderness protection, additional logging will continue to fragment this region's critical wildlife corridors and place remaining healthy and recovering forests at risk.

What would Wilderness legislation mean for the Siskiyou Wild Rivers?

Our public lands have dozens of different designations that guide their management, some more protective than others. Over the years, it has become painfully obvious that various designations from “Scenic Areas” to “Recreation Areas” to “Reserves” have loopholes that are often big enough to drive a log truck through. Even National Park status allows for management decisions that tolerate varying

levels of commercialization. When it comes to protecting our public lands, the gold standard is a “Wilderness” designation. Only Congress can designate Wilderness, and since the 1964 Wilderness Act was signed, no area has been removed from Wilderness protection after designation. Furthermore, while changing presidential administrations often mean big shifts in forest management,

the level of protection for congressionally designated Wilderness does not change.

Wilderness protection safeguards exceptional outdoor recreation experiences that are great for families or for the intrepid solo adventurer. While the list of outdoor activities one can enjoy in Wilderness is endless, highlights include: hiking, rafting, canoeing,



Salmon and salmon fishing

Known around the world for its salmon fisheries, the Siskiyou Wild Rivers area has been called by the U.S. Forest Service “an angler’s paradise.” The Chetco, Elk, Illinois, North Fork Smith, and Rogue River watersheds provide abundant habitat for fish and those who take up rod and reel to catch them. Pristine Siskiyou waters, cool and clear, host ideal habitat and spawning grounds for dozens of fish species, including rainbow and cutthroat trout, chinook and coho salmon, and some of the nation’s heartiest steelhead. The Rogue River alone provides a spawning, rearing, and migratory zone for approximately 100,000 salmon and steelhead annually. Unlike most rivers in the West, the Siskiyou Wild Rivers area hosts no large dams, allowing fish more access to historic habitat. As a national draw, the Rogue River has created a booming outdoor industry. Based on research by ECONorthwest (Jan. 2009), the economic value associated with the Rogue River was over \$30 million in 2007. It annually produces \$16 million in sport fishing and \$1.4 million in commercial fishing!



Rough and Ready Creek
GABE HOWE

defined by a road, clear-cut, or other development. The criteria for Wild & Scenic Rivers are not as strict, as the primary limitation is that the river must be undammed. Wilderness and Wild & Scenic River designations work particularly well together when Wilderness boundaries are not extended into a river's headwaters (likely due to the presence of a fragmenting road). In this instance, a Wild & Scenic River designation could extend beyond the Wilderness boundary to protect the river's headwaters that eventually flow down to the Wilderness area.

When a river is designated as a Wild & Scenic River, the managing agency determines the key values that are to be protected. After these values – such as fisheries, scenery, or geological formations – are identified, no activities are allowed in the river corridor that would degrade those values.

hunting, fishing, horseback riding, and camping. It's been said, "Wilderness is for the enjoyment of everyone. You just have to leave your chainsaw and bulldozer at home." Generally speaking, anything motorized or mechanized isn't allowed in Wilderness areas. Logging, road building, and other development are not permitted.

A Wild & Scenic River designation provides a complementary degree of protection for rivers and often goes hand in hand with protected Wilderness proposals. To qualify for Wilderness protection an area must be largely influenced only by the forces of nature. This often results in the boundary of a Wilderness area being

What's next for Oregon's Yellowstone?

In 1964, Congress passed the historic Wilderness Act. The product of decades of advocacy by conservationists and forward-thinking politicians, the legislation defined Wilderness as:

“A wilderness, in contrast with those areas where man and his own works dominate the landscape, is hereby recognized as an area where the earth and its community of life are untrammelled by man, where man himself is a visitor who does not remain.”

Wilderness designation remains our country's highest level of protection.

Although only nine million acres were protected in the first year (barely 1% of all public lands in the U.S.), among the original areas to receive protection was the Kalmiopsis Wilderness at nearly 180,000 acres.

The Kalmiopsis lies at the heart of the Siskiyou Wild Rivers and for nearly 50 years has provided an oasis of preservation in a landscape facing constant threat from short-sighted development and destructive activities.

In 1983, activists and the courts halted road construction that would have bisected the Kalmiopsis Wilderness from

the roadless wildlands to the north. In 1994 Congress green-lighted logging without laws with the infamous “salvage rider.” After President Clinton signed the salvage rider, many acres of ancient forest in the Siskiyou Wild Rivers were toppled by chainsaws. After the Biscuit Fire of 2002, the Bush administration proposed the single largest



A frog hangs out on a *Darlingtonia* in the Days Gulch Fen.

KAREN PHILLIPS

logging project in Forest Service history.

Many of the past battles to safeguard the unprotected wilderness of the Siskiyou Wild Rivers ended in success. Some did not. Today, the area faces threats both new and old while Wilderness designation remains the surest and most lasting way

to ensure no further harm comes to this internationally significant landscape.

Currently, the Siskiyou Wild Rivers faces threats from intensive mining, irresponsible logging, and widespread off road vehicle abuse. Despite these dangerous threats, momentum for securing Wilderness and

Wild & Scenic River protections for Oregon's Yellowstone is growing.

In 2008, Oregon Governor Ted Kulongoski prioritized the Siskiyou Wild Rivers as an area worthy of Wilderness protection, and urged Oregon's congressional delegation to act in its defense. In 2009, Gov. Kulongoski joined with Sen. Ron Wyden, Sen. Jeff Merkley, and Rep. Peter DeFazio to call on the Obama administration to enact a timeout on new mining claims in the region. Once the mining moratorium is solidly in place, the next step will be for Congress to pass Wilderness legislation for this half million acre expanse.

For the salmon that swim its wild rivers and the rare flowers that bloom only from its unique soils, there could be no better time than now to forever protect Oregon's Yellowstone – the Siskiyou Wild Rivers.

Please join us in this effort.

Wiggins' Lily (*Lilium pardalinum* ssp. *wigginsii*)
STEVE HENRY



The proposal

The proposal to protect Oregon's Yellowstone includes the following Wilderness and Wild & Scenic River designations.

Proposed Wilderness (acres)

Elk-Sixes River 21,100

Iron Mountain, Blackberry Creek, Panther Creek, Purple Mountain, Bald Mountain

Kalmiopsis 292,000

Buck Creek, Pebble Hill, Dutchy Creek, Soldier Creek, Briggs Creek, Myrtle Creek, Six Mile Creek, Kalmiopsis Additions, Eight Dollar Mountain, Josephine Creek, Illinois River, Rough and Ready Creek, Packers Cabin

Rogue River 96,800

Wilson Creek, Shasta Costa Creek, Stair Creek, Foster Creek, Bonanza Basin, Lake of the Woods Mountain, Monson Valley, Ophir Mountain, Lobster Creek, Lost Valley, Buckhorn Mountain, Cedar Mountain, Lone Tree Ridge, Quosatana Creek, Pickett Creek, Shan Creek, Horse Creek, Onion Mountain, Slate Creek, Wild Rogue Additions, Nine Mile Spring, Reuben Creek, Ash Gulch, Potato Illabe Mountain

Oregon's Redwoods 25,500

Jack Creek, Bear Ridge, Peavine Ridge, Winchuck River, Wheeler Creek, Mount Emily

Siskiyou Crest 56,300

Illinois-Applegate Divide, Limestone Creek, French Peak, Lake Peak, Indian Creek, Althouse Creek, Mount Hope, Lake Creek, Rabbit Lake, Round Top Mountain, Mungers Butte

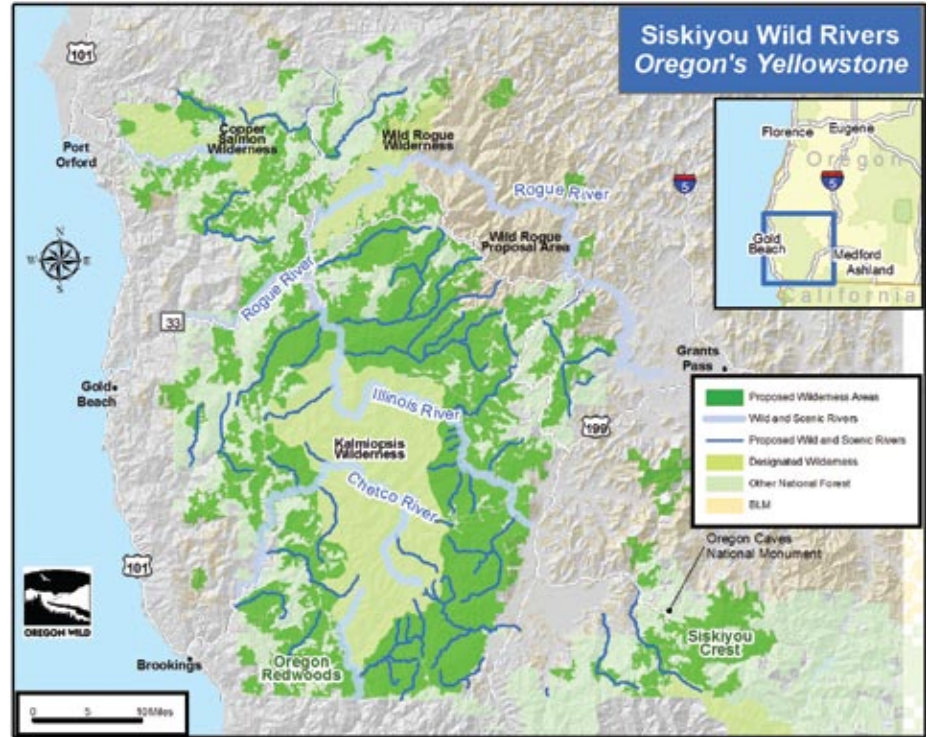
South Fork Coquille 16,300

Coal Falls Creek, Two by Four Creek, Hall Creek, Coquille River Falls, Riggs Creek, Mud Lake, Rock Creek, Jim Hayes Creek

Western Siskiyou 26,900

Signal Buttes, Snow Camp Meadow, Hunter Creek, Chetco River Gorge, North Fork Pistol River, Windy Valley, Eagle Creek, Sunrise Creek, Hog Mountain, Bravo Ransom Creek

534,900 total acres



Proposed Wild & Scenic Rivers (miles)

Althouse Creek	11	Lawson Creek	15	Shasta Costa Creek	14
Babyfoot Creek	6	Lightning Creek	2	Silver Creek	20
Baker Creek	1	Limpy Creek	2	Sixmile Creek	5
Baldface Creek	13	Little Chetco River	6	Slate Creek	5
Boulder Creek	10	Little Silver Creek	7	Snail Creek	5
Briggs Creek	17	Lobster Creek	1	South Fork Chetco River	14
Biscuit Creek	3	Middle Fork Sixes River	2	South Fork Coquille River	26
Canyon Creek	4	Mislatnah Creek	5	South Fork Lobster Creek	8
Collier Creek	9	North Fork Diamond Creek	5	South Fork	
Dailey Creek	4	North Fork Lobster Creek	7	Rough & Ready Creek	6
East Fork Illinois River	1	North Fork Pistol River	7	South Fork Sixes River	7
East Fork Indigo Creek	13	North Fork		Spokane Creek	2
East Fork Pistol River	5	Rough & Ready Creek	9	Sucker Creek	17
East Fork Winchuck River	8	North Fork Silver Creek	15	Taylor Creek	11
Emily Creek	8	Pistol River	7	Todd Creek	7
Fall Creek	8	Rancherie Creek	6	Unnamed	10
Horse Sign Creek	6	Rough & Ready Creek	6	West Fork Illinois River	4
Indigo Creek	8	Salmon Creek	2	West Fork Indigo Creek	11
Jackson Creek	1	Sebastapol Creek	2	Whiskey Creek	4
Josephine Creek	13	Shan Creek	5	Winchuck River	2

453 total miles



Now is the time to protect Oregon's Yellowstone – the Siskiyou Wild Rivers. PLEASE JOIN US IN THIS EFFORT.

