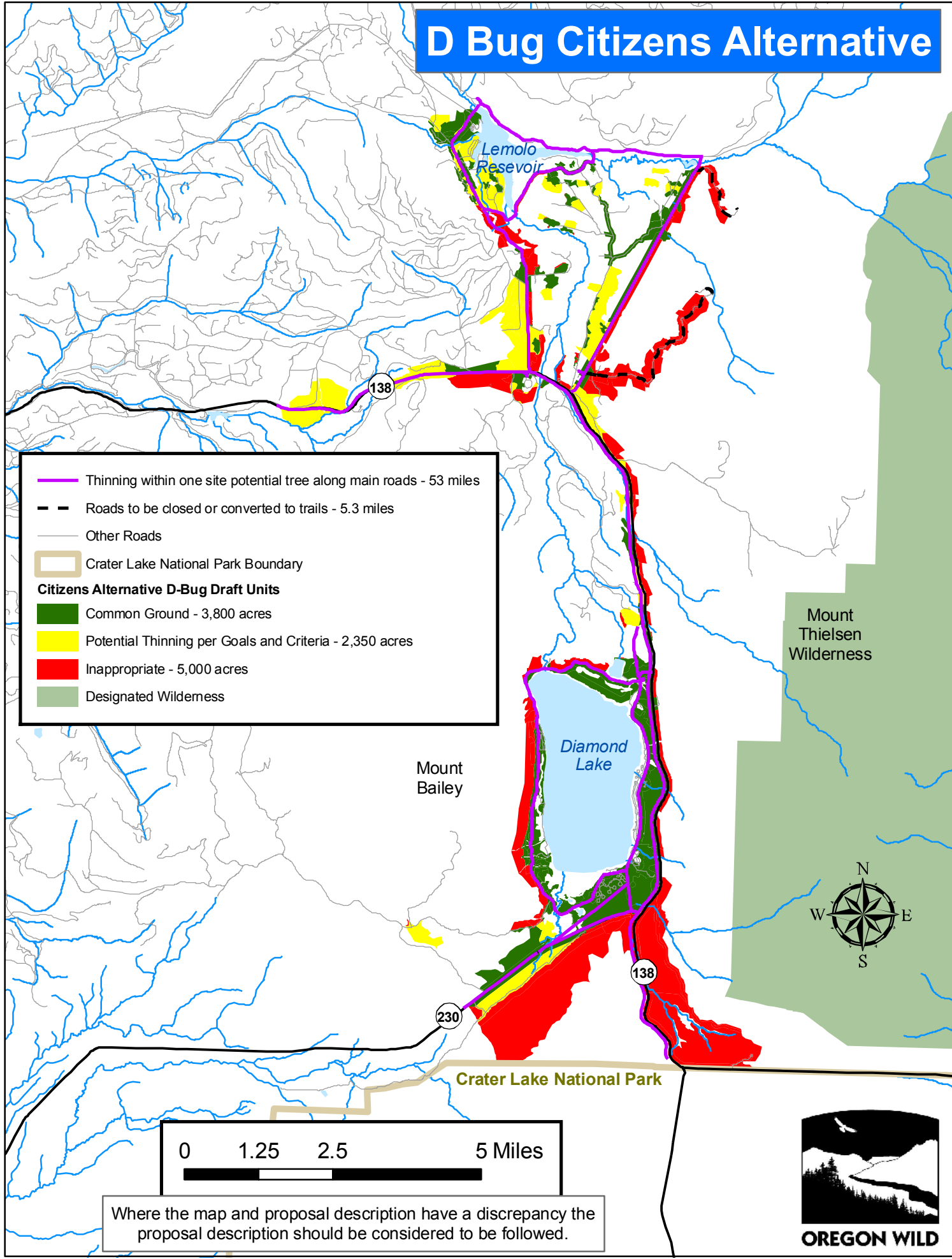
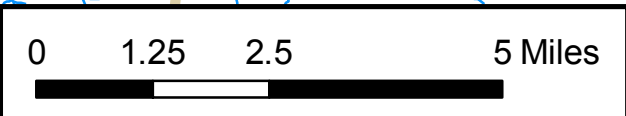


D Bug Citizens Alternative



- Thinning within one site potential tree along main roads - 53 miles
- - Roads to be closed or converted to trails - 5.3 miles
- Other Roads
- ▭ Crater Lake National Park Boundary
- Citizens Alternative D-Bug Draft Units**
- Common Ground - 3,800 acres
- Potential Thinning per Goals and Criteria - 2,350 acres
- Inappropriate - 5,000 acres
- Designated Wilderness



Where the map and proposal description have a discrepancy the proposal description should be considered to be followed.

