



HIKING WILD

A CONSERVATIONIST'S GUIDE TO OREGON'S PACIFIC CREST TRAIL

OREGON WILD BY THE NUMBERS 2014-2015

30,000

PETITION SIGNATURES DELIVERED TO SENATOR WYDEN IN SUPPORT OF THE CRATER LAKE WILDERNESS PROPOSAL

53

HIKES AND OUTDOOR TRIPS LED

42

OUTREACH AND ACTIVIST TRAINING EVENTS HOSTED

16

BREWERY AND BREWING COMMUNITY PARTNERS THAT JOINED THE OREGON BEERWISERS' ALLIANCE IN ITS INAUGURAL YEAR

90%

WATER CONTENT IN CRAFT BEER (WATER QUALITY AFFECTS BEER QUALITY)

34,914

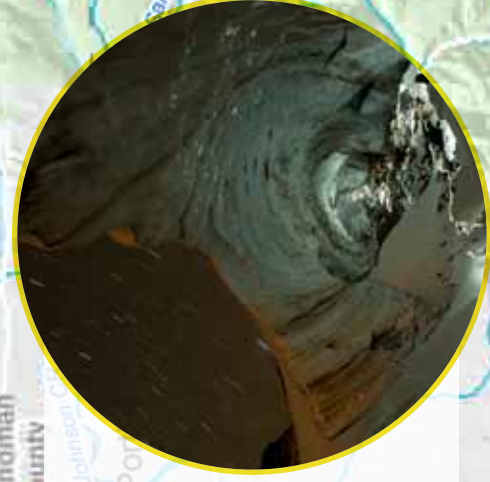
TOTAL ACTIONS TAKEN ONLINE

PHOTOS (CLOCKWISE FROM TOP LEFT): ERIC GUTH; CHRIS SHERMAN; AJ DEXTER; DAVID LORENZ; WAINSTON; BRAD GOLDFPANT; MARELLE COMBEN; USFA; ODFW; JUSTIN BAILE; PETE SPRINGER; ERK SANDERS; USFWS



Sandy Glacier Caves

Newly discovered ice caves in Sandy Glacier are believed to be the largest glacier caves in the lower 48. It is predicted that, due to a warming climate, these caves will be completely gone in 7-10 years.



Mount Hood

At 11,240 feet, Mount Hood is the highest point in Oregon. By 2009, 63,177 acres surrounding the dormant volcano were designated Wilderness, though several key areas and watersheds remain unprotected.



Red Tree Vole

Red tree voles are highly specialized, nocturnal mammals that live in old growth Douglas fir trees and feed on pine needles. Due to the destruction of their habitat, they are considered a near-



Olaillie Scenic Area

Olaillie Lake, a snow fed alpine lake, is a popular layover for PCT hikers. Conservationists recently won a victory to prevent the PCT route just north of the lake from being aggressively



Mount Jefferson

Recreation opportunities abound in the Mount Jefferson Wilderness, as well as vital habitat for deer, black bear, bald eagles and



Whitebark Pine

Pinus albicaulis is found at high elevation, but fire suppression and a warming climate has made the species vulnerable to pine beetle outbreaks and fungal infections. The US Fish and Wildlife Service has warned the species



Waldo Lake

Waldo Lake is over 10 square miles and Oregon's second largest non-alkali lake. It is named after conservationist John B. Waldo, who recorded a trek from here to Mount Shasta, a route that would



Three Sisters

The Three Sisters Wilderness is one of the most popular Wilderness areas in Oregon, and its second largest. It has the distinction of being among the first Wilderness areas designated by



Crater Lake

First preserved in 1902, Crater Lake National Park is one of Oregon's most inspiring destinations. Unfortunately, nearby mining claims and logging projects just outside the park threaten forests and



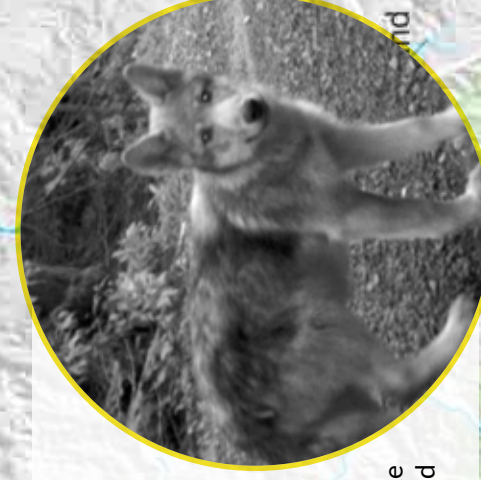
Sky Lakes

Designated in 1984, the Sky Lakes Wilderness has over 200 pools, from small ponds to 40 acre lakes. Some of these pools contain the purest natural lake-water in the



OR-7 and Pups

Wolves have recently returned to the Oregon Cascades after a nearly 60 year absence. OR-7, a radio collared wolf from Eastern Oregon, made a historic journey all the way to California and has now settled down with a mate and litter in the proposed



Pacific Fisher

The fisher is a large, elusive cousin to the weasel and one of the few animals to prey on porcupines. Their numbers have dwindled recently as many are poisoned by illegal marijuana grows



..... Pacific Crest Trail

■ Protected Wilderness

■ Unprotected Wilderness

