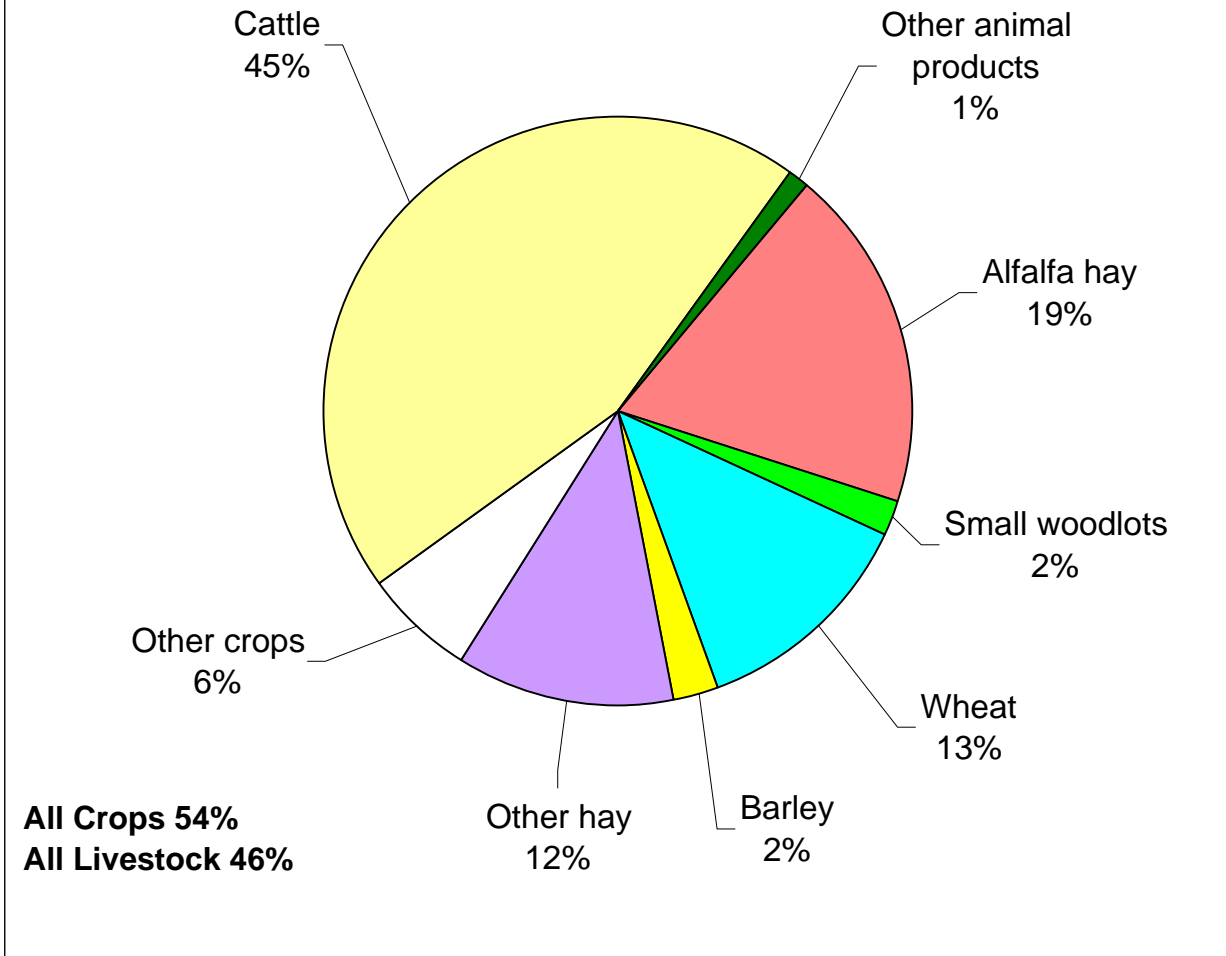


## AGRICULTURAL COMMODITY SALES WALLOWA COUNTY, 2012p



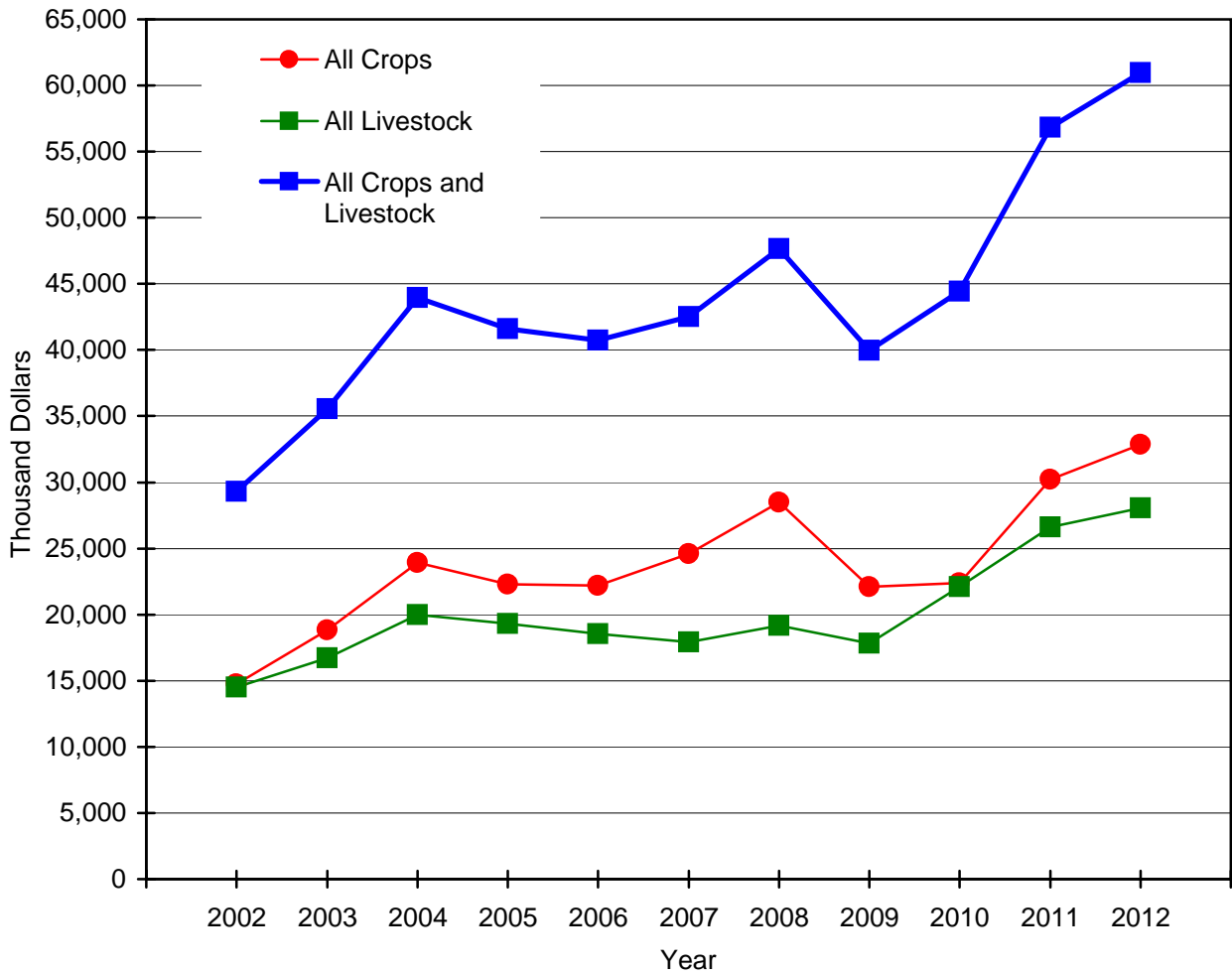
Commodity	Value (\$ 000)
Alfalfa hay	11,592
Small woodlots	1,057
Wheat	7,738
Barley	1,388
Other hay	7,308
Other crops	3,791
<b>ALL CROPS</b>	<b>32,874</b>
Cattle	27,455
Other animal products	623
<b>ALL LIVESTOCK</b>	<b>28,078</b>
<b>ALL CROPS &amp; LIVESTOCK</b>	<b>60,952</b>

Year	Crops	Livestock	Total
2010r	22,376	22,084	44,460
2011r	30,232	26,623	56,855
2012p	32,874	28,078	60,952

*r - revised, p - preliminary*  
 Source: Extension Economic Information Office  
 Oregon State University  
 February 15, 2013

# Wallowa County 2002-2012

## Total Gross Farm Sales



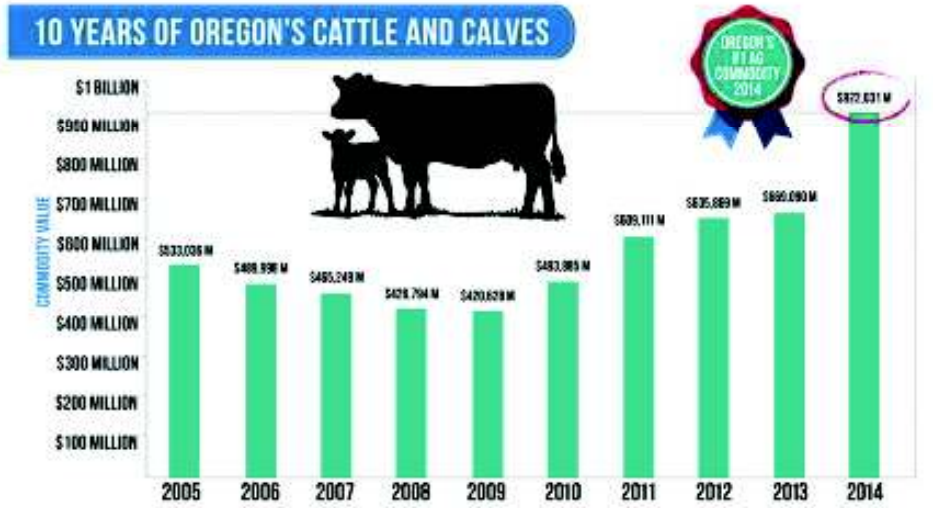
Source: Extension Economic Information Office, Oregon State University

February 15, 2013



Home Categories Audio stories ODA website ODA publications

Business, Ranching, ODA Cattle overtakes nursery as Oregon's top ag commodity



## Cattle overtakes nursery as Oregon's top ag commodity

PHOTO: PHILIP WELCH/OREGON STATE NEWS SERVICE; ILLUSTRATION: JEFF HARRIS

Translate